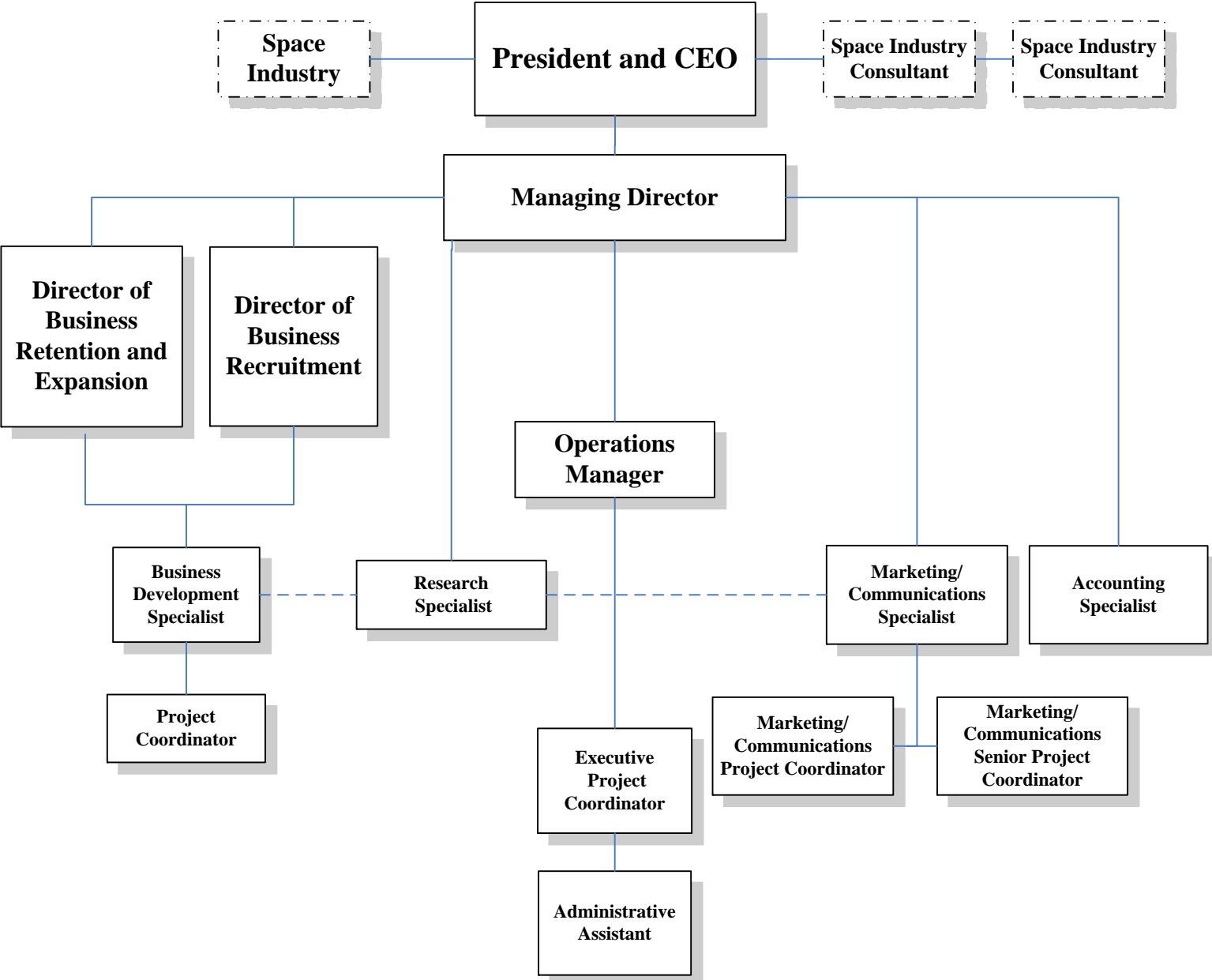
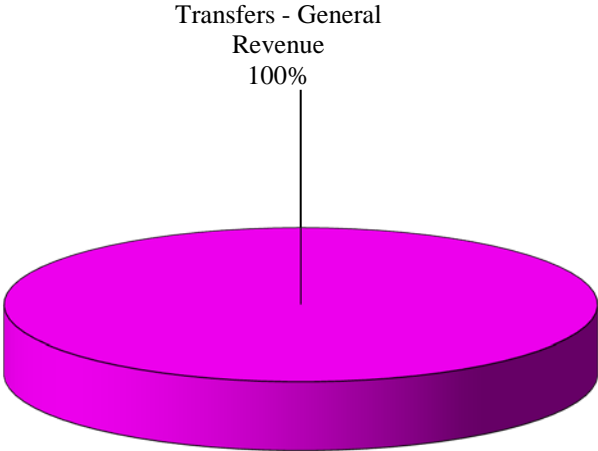


**Economic Development Commission
of Florida's Space Coast, Inc.
Board of Directors**

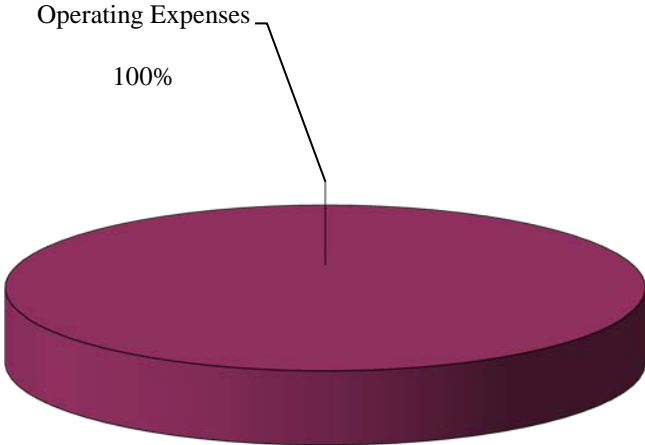


ECONOMIC DEVELOPMENT COMMISSION

**OPERATING REVENUES (SOURCES) FY 2011-2012
TOTAL BUDGET \$1,400,050**



**OPERATING EXPENDITURES (USES) FY 2011-2012
TOTAL BUDGET \$1,400,050**



ECONOMIC DEVELOPMENT COMMISSION: SUMMARY

MISSION STATEMENT:

The Economic Development Commission (EDC) is a community coalition promoting economic development for a better Brevard. It is the only county-wide organization dedicated to ensuring the Space Coast is competitive in the global market.

PROGRAMS AND SERVICES:

Strategic priorities of the EDC are focused on:

- 1) Business Development - Target and pursue cluster-related industries to create value-added jobs.
- 2) Competitive Business Environment - Advocate and make change in areas determined to improve the business environment.
- 3) Marketing and Communications - Promote Brevard regionally, nationally and internationally.
- 4) Resource Development and Allocation - Align budgets and resources to strategic priorities and goals.

These strategic priorities will guide the following programs:

Existing Industry Assistance - Business Retention

- Support business community through manufacturing & high tech company visitations
- Distribute International Trade Leads & encourage linkages
- Market all state incentive programs to local companies
- Host targeted conferences/seminars for manufacturers to enhance business opportunities
- Market Brevard's business resources and suppliers to outside companies via sales missions/trade missions

Manufacturing Investment - Business Recruitment

- Prospect new business investment for Brevard and conduct company site tours
- Measure economic impact of relocations
- Market opportunities in Brevard via sales missions/trade missions
- Enhance electronic marketing via EDC Web Site for Site Relocation Consultants

Enhancement of Space Industry

- Minimize the probable workforce reduction from the end of the Shuttle Program in 2010
- Increase commercial space launch opportunities for Brevard County
- Ensure resources to secure opportunities for Brevard are developed to their fullest potential
- Identify new space-related development opportunities
- Develop strategic elements to promote Brevard County to leading space industry companies

Support of our Military Installations

- Enhance installations and defense entities within Brevard through targeted campaigns and communications
- Further engage state and federal level partners to support military initiatives and promote opportunities for businesses

Research/Publications

- Update Brevard County Economic Profile
- Enhance and maintain inventory of available buildings
- Demographic/Technical data provided to citizens and clients
- Wage/Labor/Analysis Performed
- Industrial Revenue Bond Assessment

TRENDS AND ISSUES:

The funding EDC has received from the County translates into a direct impact through the increased number of prospects, prospect site tours, and company relocations and expansions. Those activities and initiatives have directly enhanced the overall business competitiveness of Brevard County. The funds allocated to EDC for FY 2011-2012 will be used to maintain the economic and industrial base through EDC's programs on industrial recruitment, enhancement and expansion.

MAJOR SERVICE LEVEL IMPACTS:

There are no major service level impacts for FY 2011-2012 for the Economic Development Commission.

ECONOMIC DEVELOPMENT COMMISSION: DEPARTMENT SUMMARY

DEPARTMENT REVENUES AND EXPENDITURES

	Actual FY2009-2010	Final Budget FY2010-2011	Adopted Budget FY2011-2012	Difference Inc/(Dec)	% Inc/(Dec)
REVENUES:					
Taxes	\$0	\$0	\$0	\$0	0.00%
Permits, Fees, & Spec. Assess.	\$0	\$0	\$0	\$0	0.00%
Intergovernmental	\$0	\$0	\$0	\$0	0.00%
Charges for Services	\$0	\$0	\$0	\$0	0.00%
Fines and Forfeits	\$0	\$0	\$0	\$0	0.00%
Miscellaneous	\$0	\$0	\$0	\$0	0.00%
Statutory Reduction	\$0	\$0	\$0	\$0	0.00%
<i>Operating Revenues:</i>	\$0	\$0	\$0	\$0	0.00%
Balance Forward	\$0	\$0	\$0	\$0	0.00%
Transfers - General Revenue	\$1,500,050	\$1,400,050	\$1,400,050	\$0	0.00%
Transfers - Others	\$0	\$0	\$0	\$0	0.00%
Other Finance Sources	\$0	\$0	\$0	\$0	0.00%
<i>Non-Operating Revenues:</i>	\$1,500,050	\$1,400,050	\$1,400,050	\$0	0.00%
TOTAL REVENUES:	\$1,500,050	\$1,400,050	\$1,400,050	\$0	0.00%
EXPENDITURES:					
Compensation and Benefits	\$0	\$0	\$0	\$0	0.00%
Operating Expenses	\$1,500,050	\$1,400,050	\$1,400,050	\$0	0.00%
Capital Outlay	\$0	\$0	\$0	\$0	0.00%
Grants and Aid	\$0	\$0	\$0	\$0	0.00%
<i>Operating Expenditures:</i>	\$1,500,050	\$1,400,050	\$1,400,050	\$0	
CIP	\$0	\$0	\$0	\$0	0.00%
Debt Service	\$0	\$0	\$0	\$0	0.00%
Reserves - Operating	\$0	\$0	\$0	\$0	0.00%
Reserves - Capital	\$0	\$0	\$0	\$0	0.00%
Reserves - Restricted	\$0	\$0	\$0	\$0	0.00%
Transfers	\$0	\$0	\$0	\$0	0.00%
<i>Non-Operating Expenditures:</i>	\$0	\$0	\$0	\$0	0.00%
TOTAL EXPENDITURES:	\$1,500,050	\$1,400,050	\$1,400,050	\$0	0.00%
PERSONNEL:					
Full-time Positions	0.00	0.00	0.00	0.00	0.00%
Part-time Positions	0.00	0.00	0.00	0.00	0.00%
Full-time Equivalent	0.00	0.00	0.00	0.00	0.00%
Temporary FTE	0.00	0.00	0.00	0.00	0.00%
Seasonal FTE	0.00	0.00	0.00	0.00	0.00%

ECONOMIC DEVELOPMENT: PROGRAM PROFILE

BUDGET ANALYSIS:

REVENUES:

Operating Revenues have remained constant at \$1,400,050 for FY 2011-2012. Compared to FY 2010-2011, this is a 0% increase in funding.

EXPENDITURES:

Operating Expenditures have remained constant at \$1,400,050 for FY 2011-2012 to align with projected revenue streams for the agency. Compared to FY 2010-2011, this is a 0% increase in spending.

PROGRAM CHANGES:

NONE REQUESTED